



INSTALLATION GUIDE

BBT047/ BBC047/ BBCD047

TOYOTA PRADO 150 (FACELIFT) 11/2013 ONWARDS
(Except Vehicles with Factory Headlight Washers)



- Ironman 4x4 BBT/ BBC/ BBCD047 Bull Bars fit to a Toyota Prado 150 (Facelift) 11/13+ (without factory headlight washers).
- It will take about 3 hours to install.

NOTE: This product has been tested for air bag compatibility and therefore the mounting system **MUST NOT** be modified

IMPORTANT: Bull Bar installations should only be done by a qualified person and it is the responsibility of this person to ensure correct fitment.

1. Before installation check bull bar application is compatible with your vehicle.

2. Remove grill and front bumper

3. Locate and cutout cutting template at the end of this Instruction Guide.

4. Mask outer ends of bumper bar and place cutting template in position in line with joint between bumper and mudguard, and wheel arch.



5. Mark cut line and repeat for other side.



6. Mask a line across bumper level with the top of fog light opening, top of number plate mount and the bottom of lines marked with template in previous steps.



7. Cut along all lines and remove lower section of bumper and end sections.



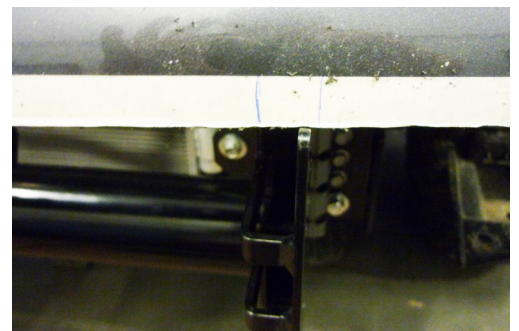
8. Refit to car and install pinch weld to cuts on ends of bumper.



9. Remove aluminium bumper reinforcement and mounting brackets.



10. Hold mounting cradle in position and mark bumper in two positions as shown to allow clearance for brackets. Remove two sections 30mm high as shown.



11. Place U-Bolts in position around chassis from inside out, in front of radiator.



12. Attach mounting cradle to chassis using factory bolts and heavy duty flat washers.

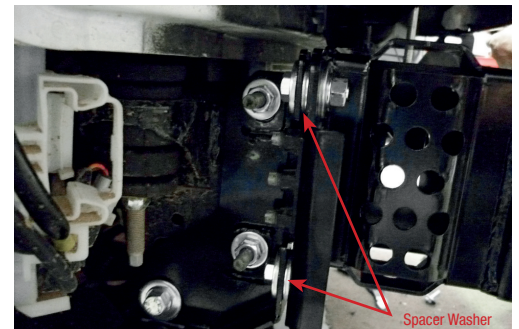


13. Place reinforcing brackets over U Bolts outside chassis and loosely fit M10 nuts, springs and flat washers.

Fit M12 bolt, spring and flat washer to captive nut in chassis.

Place two heavy duty flat washers between reinforcing bracket and mounting cradle and secure with M12 bolts, flat washers, spring washers and nuts.

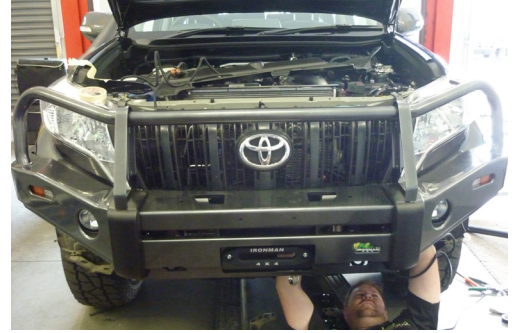
Tighten all bolts.



14. If winch is being installed, refer to winch installation instructions.

15. Unwrap bull bar. Check over riders and light assemblies are tight in bull bar before installation.

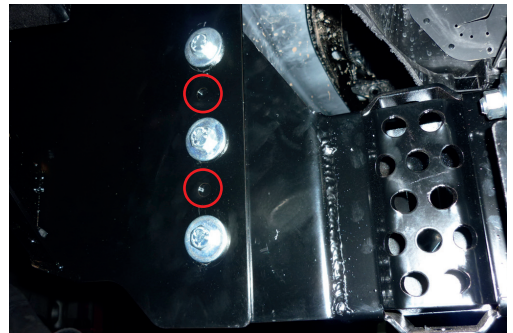
16. Fit bull bar to chassis brackets using M12 bolts, flat washers, spring washers and nuts provided.



17. Align bull bar with vehicle and tighten all bolts.



18. Once bull bar is aligned with vehicle and tightened, drill through pinning holes (circled in red) between bull bar and chassis bracket and secure with bolts, washers and nuts provided.



19. Connect park lights, indicators and fog lights as per wiring diagrams on page 11 of Instruction Guide.

20. Fit protection plates underneath the bull bar using M8 bolts, spring washers and flat washers provided.

NOTE: Centre plate mounts between factory bracing and chassis as shown.



21. Trim left hand mudguard liner level with protection plate.

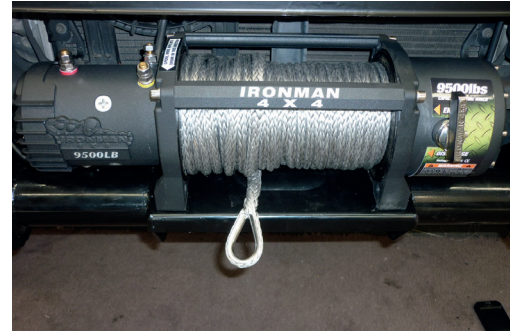


22. Trim right hand liner and secure to washer bottle with cable ties as shown.



Winch Installation

1. Bolt winch to cradle with gearbox to the left hand side of vehicle and cable spooling from bottom of the cable drum using bolts and washers provided.

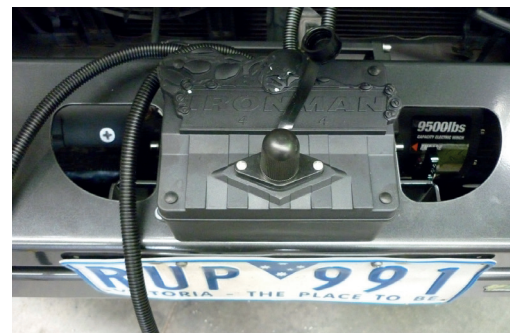


2. Bolt fairlead to recess in front of bull bar using bolts, washers and nuts provided.



3. Fit bull bar to vehicle referring to steps of bull bar fitting instructions.

4. Mount control box in desired location.



5. Connect three colour coded cables to the corresponding poles on winch motor.



6. Connect the thin black earth wire and negative battery cable to the earth connection on the opposite side of winch motor.



7. Run the positive and negative battery cables into the engine bay taking care to secure cables away from any sharp or moving objects.

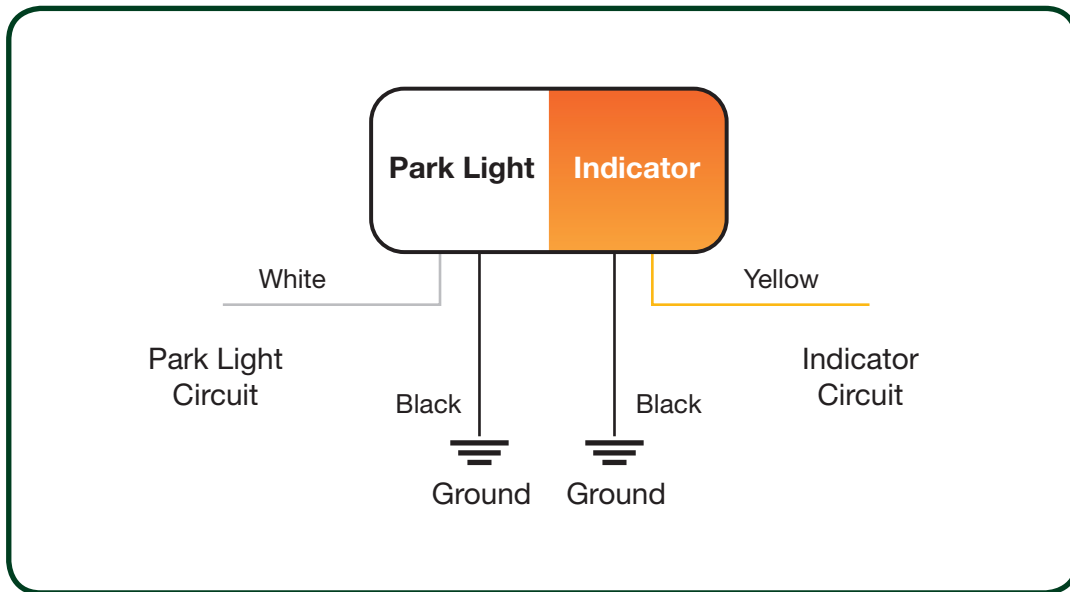
8. Connect positive and negative battery cables main battery of vehicle (Not Auxilliary Battery).

9. Attach breather hose to barb fitting on winch motor. Run hose to the highest available point in engine bay and cable tie in position. Cable tie hose away from any sharp, hot or moving objects.

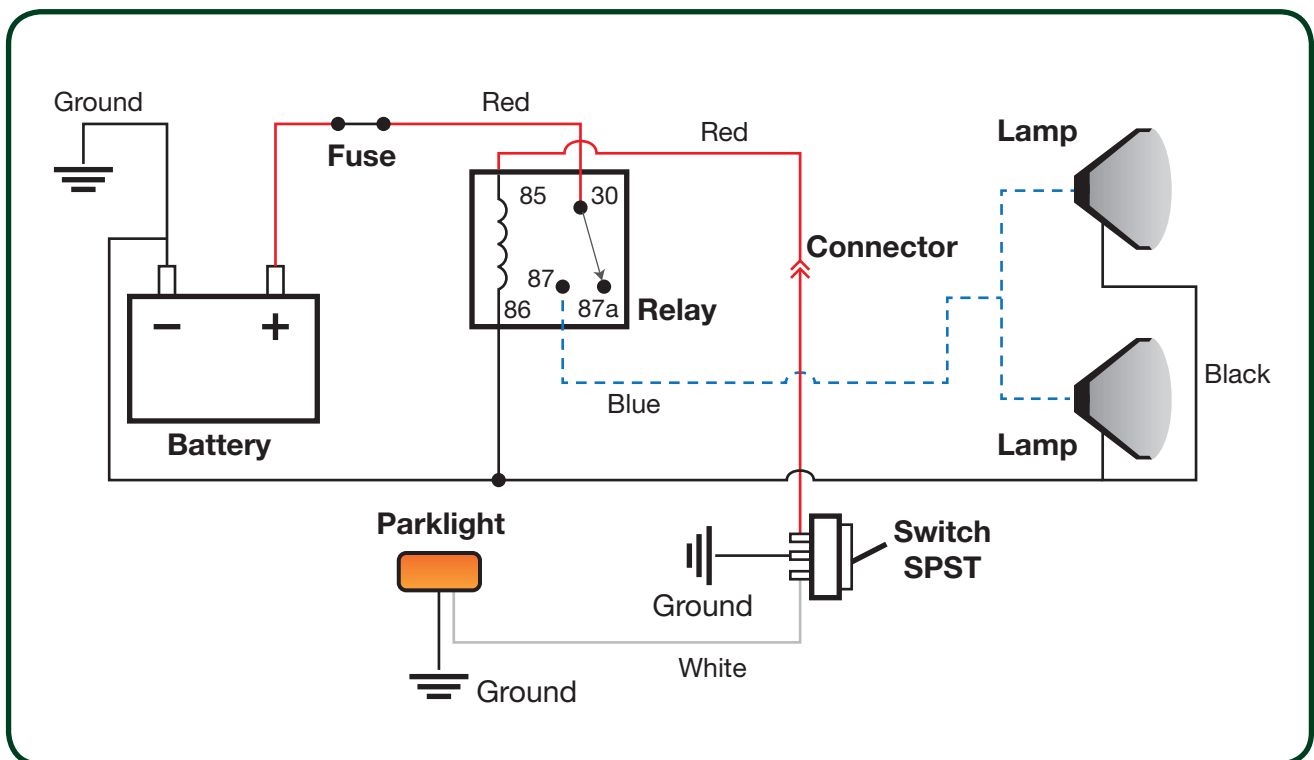


Wiring Diagrams

PARK LIGHT & INDICATOR

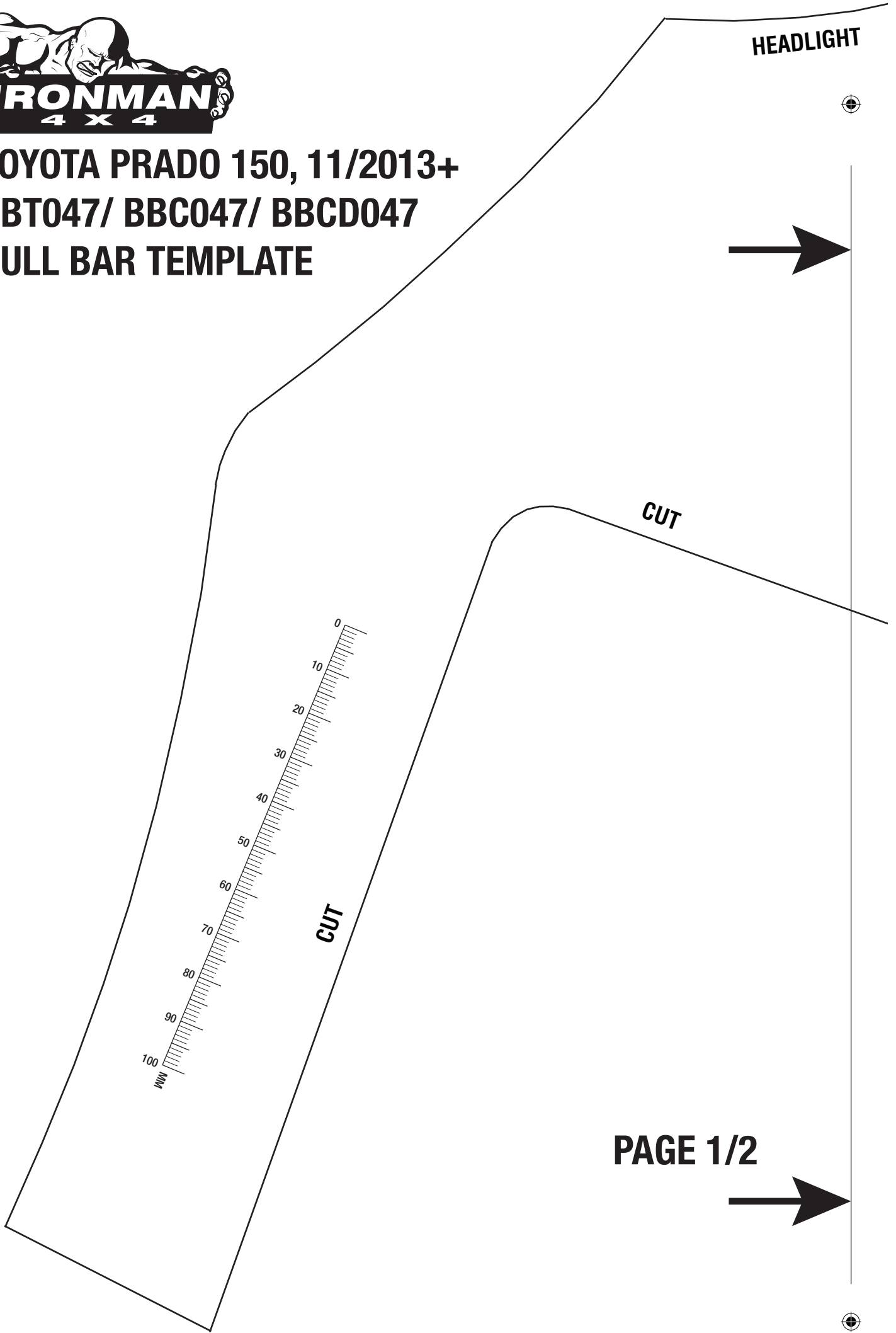


FOG LIGHTS





**TOYOTA PRADO 150, 11/2013+
BBT047/ BBC047/ BBCD047
BULL BAR TEMPLATE**



PAGE 1/2

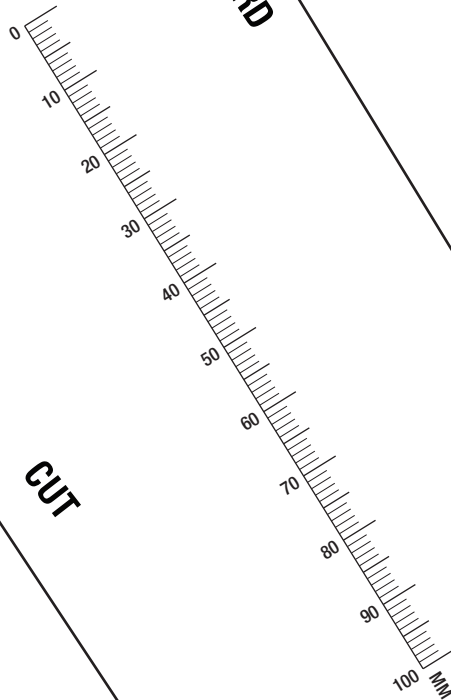
DLIGHT



**TOYOTA PRADO 150, 11/2013+
BBT047/ BBC047/ BBCD047
BULL BAR TEMPLATE**



MUDGUARD



CUT

250816

PAGE 2/2



WHEEL ARCH